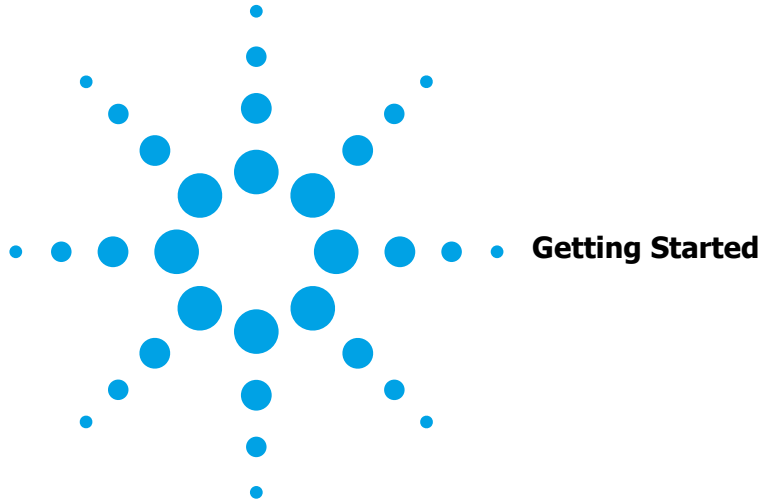


Agilent Technologies

82357A USB/GPIB Interface for Windows



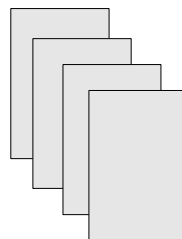
IMPORTANT
Install Agilent IO Libraries Software
Before Connecting 82357A Interface to PC



1 Before You Install the 82357A

- ❑ **Check Your Shipment Items.** In addition to this poster, your 82357A USB/GPIB Interface for Windows shipment should include these items:

- *Agilent 82357A USB/GPIB Interface for Windows*
- *Agilent IO Libraries for Instrument Control CD*
- *82357A USB/GPIB Interface for Windows User's Guide*
- *82357A Certificate of Calibration*
- *82357A Registration Card*
- *Software License Agreement*

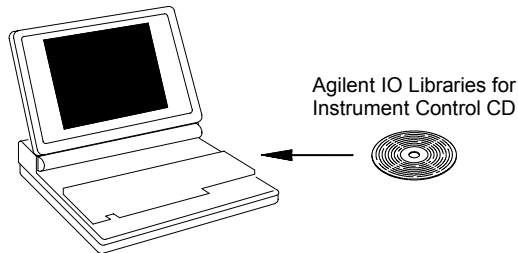


- ❑ **If Items are Missing or Damaged.** Contact Agilent Technologies. See the back of this poster for addresses.
- ❑ **Check Your PC Operating System.** The 82357A USB/GPIB Interface for Windows is supported **ONLY** on Windows 98(SE)/Me/2000/XP Professional.
 - Do not install the 82357A if your PC does not have a Windows 98 (SE), Windows Me, Windows 2000, or Windows XP Professional operating system.
 - During installation, Windows Plug and Play Manager dialog boxes may be displayed. See the *82357A USB/GPIB Interface for Windows User's Guide* for descriptions of dialog boxes.

Do **NOT** connect the 82357A to your PC at this time.

2 Install Agilent IO Libraries

- ❑ **Insert the CD.** Turn on your PC and insert the *Agilent Technologies IO Libraries for Instrument Control CD* (Version L.01.00 or later) into the CD-ROM drive. If the installer is not automatically activated, click **Start | Run** and type **<drive>:SETUP.EXE**

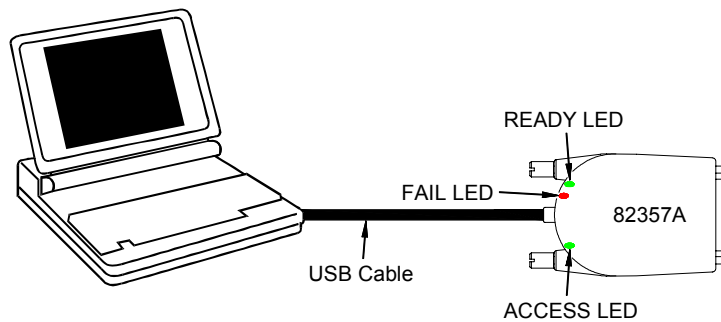


- ❑ **Install the Libraries.** When the Agilent IO Libraries display appears, follow the on-screen instructions to install the libraries. See the *82357A USB/GPIB Interface for Windows User's Guide* for details.
- ❑ **Look for Blue IO Icon.** After the libraries are installed, a blue **IO** icon is displayed on the Windows taskbar in the bottom-right corner of the screen. You can click the icon to manually run IO configuration utilities and to display online documentation. It is not necessary to use the icon at this time.



3 Connect 82357A Interface

- ❑ **Plug the 82357A into a USB Port.** Plug the 82357A USB cable into an available USB port on your PC or on a supported USB hub. To connect to USB hubs, see the *82357A USB/GPIB Interface for Windows User's Guide*. It is not necessary to connect the 82357A to GPIB instruments at this time.



- ❑ **Observe the 82357A LEDs.** Observe the three LEDs on the 82357A. Initially, only the red FAIL LED should be ON. After 10 seconds, all three LEDs should be ON to show that the 82357A has been installed, but is not yet configured for use with the Agilent IO Libraries. The 82357A will be configured in Step 4.

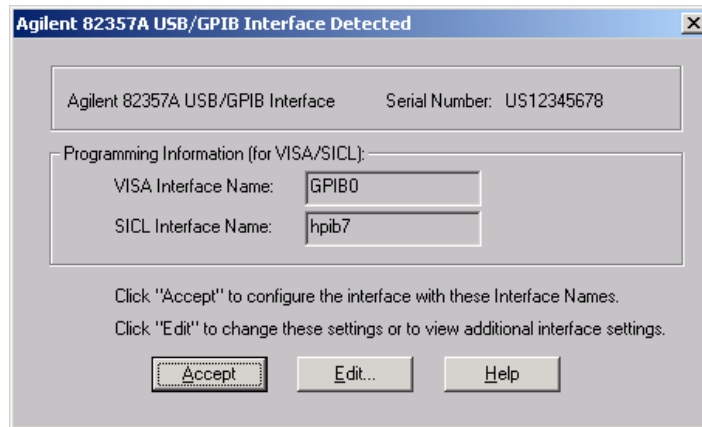
If any LED is OFF after 10 seconds, **STOP**. See the *82357A USB/GPIB Interface for Windows User's Guide* for information.

- ❑ **Observe Windows Plug and Play Manager Displays.** After the 82357A is plugged into a USB port, Windows Plug and Play Manager dialog boxes may appear. Observe the dialog boxes and take actions as required. See the *82357A USB/GPIB Interface for Windows User's Guide* for information. Then, go to **Step 4 - Configure 82357A Interface**.

4 Configure 82357A Interface

- ❑ **Observe the Interface Detected Box.** After the Windows Plug and Play Manager installation sequence completes, an **Agilent 82357A USB/GPIB Interface Detected** dialog box should appear.

If the dialog box does not appear, **STOP**. See the *82357A USB/GPIB Interface for Windows User's Guide* for information.

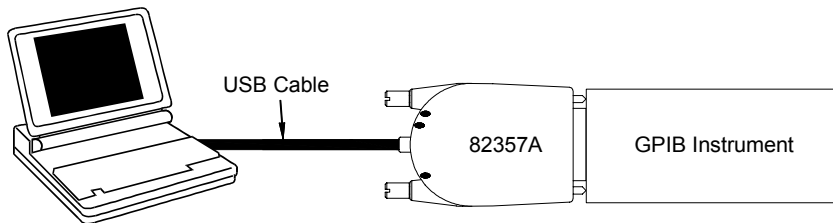


- ❑ **Configure the 82357A.** Although the 82357A has been installed, the 82357A must be configured before it can be used for programming.
 - **To Accept the Settings.** Click **A**cept (or the **x** box) to configure the 82357A with the Interface Names shown in the dialog box. After you click **A**cept, only the green READY LED should remain ON.
 - **To Edit the Settings.** Click **E**dit... to change the settings or to view additional settings. After you complete the edit, only the green READY LED should remain ON.

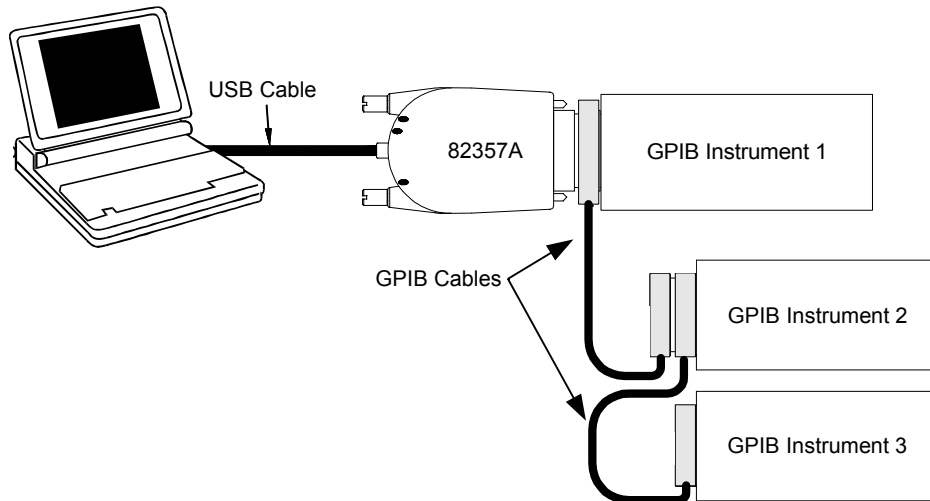
5 Connect GPIB Instruments

- ❑ **Connect the 82357A to GPIB Instruments.** Connect one or more GPIB instruments (14 instruments maximum) to the GPIB connector on the 82357A as shown.

Single Instrument Connections



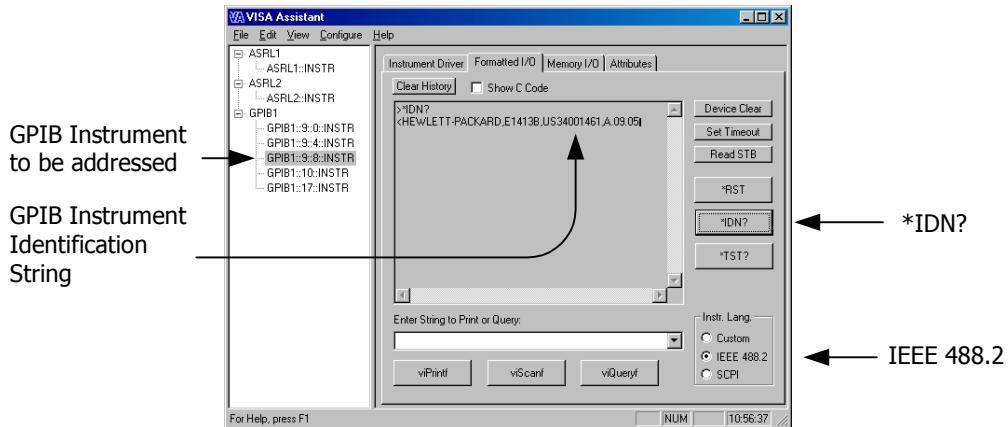
Multiple Instrument Connections



6 Program Instruments via 82357A

❑ **Use VISA Assistant to Communicate with Instruments.** After the 82357A has been configured and connected to GPIB instruments, you can use VISA Assistant to establish communication between your PC and GPIB instruments. To run VISA Assistant for an IEEE-488.2 compliant instrument:

1. Click the blue **IO** icon on the Windows taskbar.
2. Click **Run VISA Assistant** to display VISA Assistant.
3. Maximize the VISA Assistant screen.
4. Highlight the GPIB instrument to be addressed.
5. Select the **Formatted I/O** tab.
6. Select the **IEEE 488.2** button.
7. Click the ***IDN?** button.
8. The instrument identification string should appear.
9. Repeat Steps 4 - 8 for the next GPIB instrument.



❑ **Program GPIB Instruments (Optional).** After communication has been established, you can program your GPIB instruments using VISA or SICL. See **82357A General Information** on the back of this poster for applicable documentation.

82357A General Information

- ❑ **82357A Related Documentation.** See the following documents for information related to the 82357A. All documents are available in electronic format by clicking the blue **IO** icon on the Windows taskbar and selecting **View Documentation**.

- *Agilent 82357A USB/GPIB Interface for Windows User's Guide* describes the 82357A and provides installation and troubleshooting information.
- *Agilent IO Libraries Installation and Configuration Guide for Windows* provides a description of the Agilent IO Libraries.
- *Agilent VISA User's Guide* describes the Agilent Virtual Instrument Software Architecture (VISA) library.
- *Agilent SICL User's Guide for Windows* describes the Agilent Standard Instrument Control Library (SICL) for Windows.
- Go to <http://www.agilent.com/find/82357> for additional information on the 82357.

- ❑ **Contacting Agilent**

Telephone Numbers

Americas Call Center: 1-800-452-4844
Canada Call Center: 1-877-894-4414
European Call Center: +31-20-547-9900
Japan Call Center: +81-426-56-7832

World-Wide Web

<http://www.agilent.com/find/assist>

Copyright © 2002, Agilent Technologies, Inc. All rights reserved.



Part Number 82357-90100
Printed in U.S.A. E0102